



LOMAS DEL **HIGUERÓN**  
by TOP GESTIÓN

# LOMAS 4

MODULO C  
FRONT DOOR 3

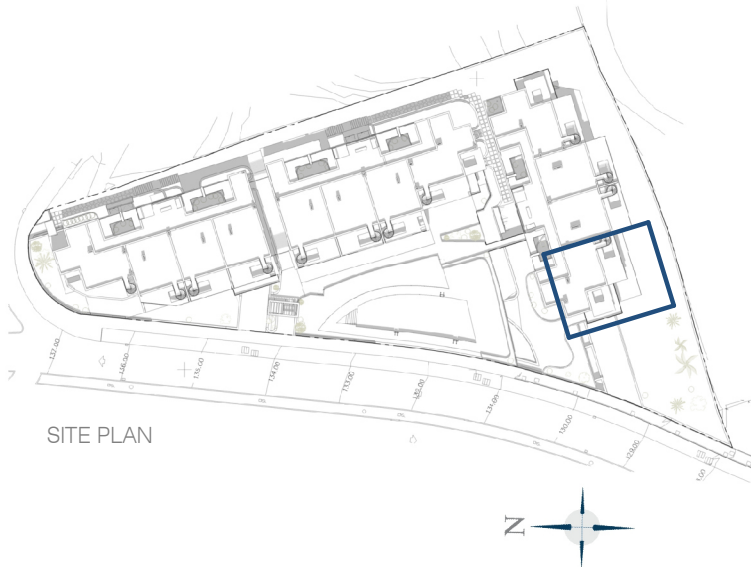
## GROUND FLOOR

GARDEN VILLA A

### BUILT AREA

Living Area	106,76 m <sup>2</sup>
Terrace	71,42 m <sup>2</sup>
Private Garden	63,00 m <sup>2</sup>
<b>TOTAL BUILT AREA:</b>	<b>178,18 m<sup>2</sup></b>

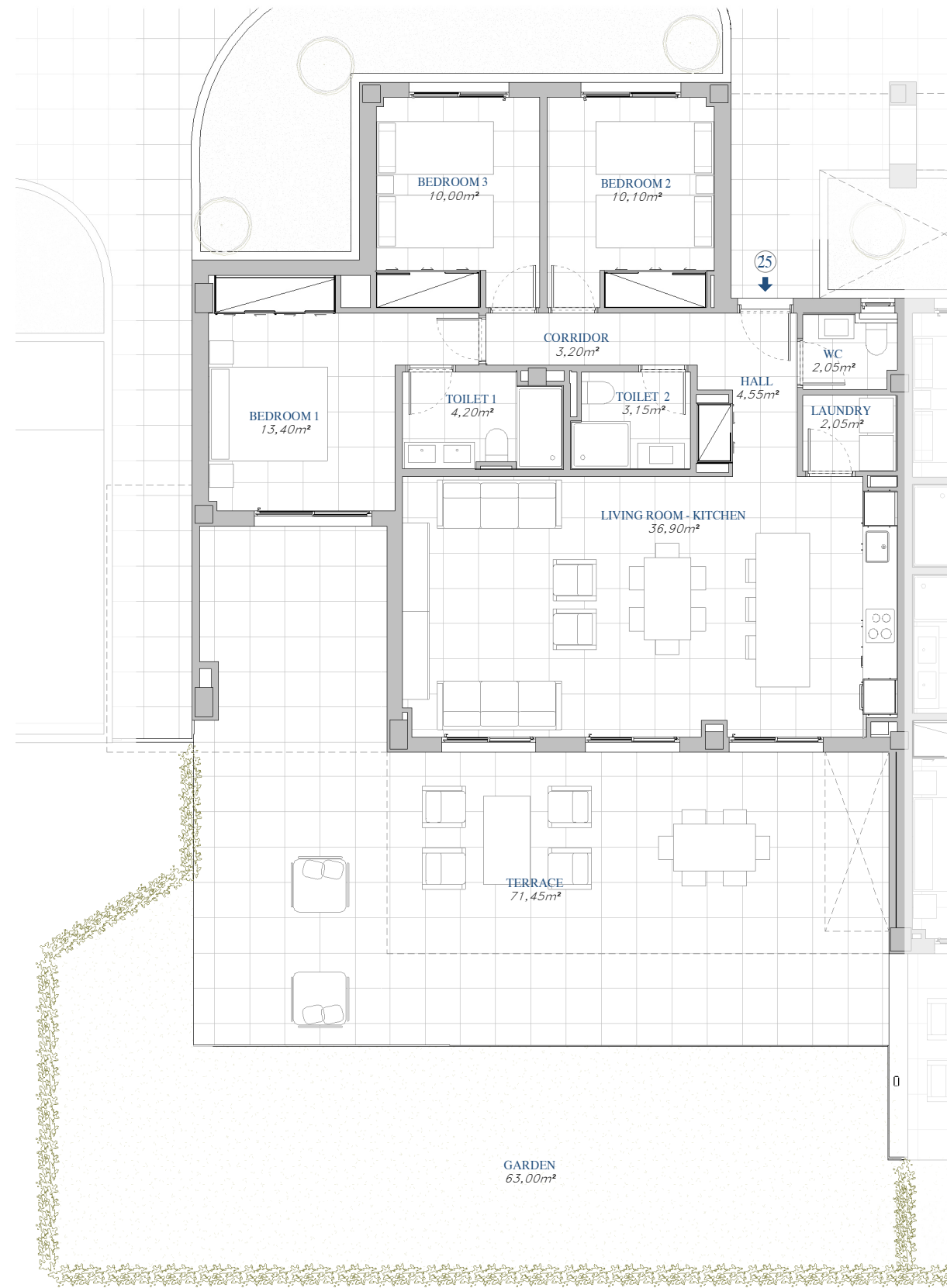
"This plan may be modified according to the development of the Execution Project and the construction. It does not constitute a contractual document. The reflected furnishing is for decoration purposes only. The Project Management reserves the right to make the necessary changes for functional, esthetic and legal reasons that may occur, without implying a decrease in the quality of the construction".



SITE PLAN



HIGUERÓN  
*Resort*



GRAPHIC SCALE

